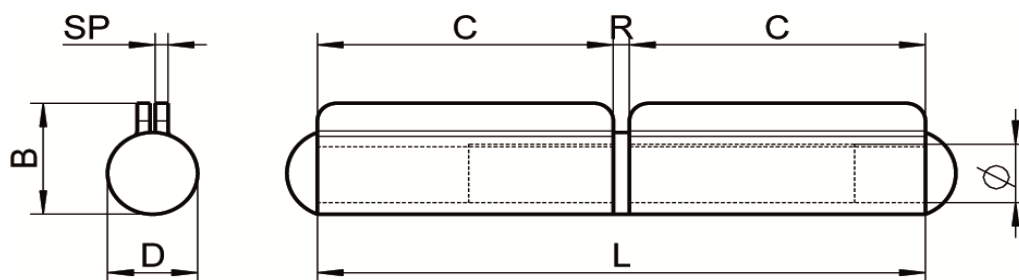





ART. M8132

Cerniere a saldare perno fisso, aisi 304 / A2

*Weld-on hinges fixed pin, aisi 304 / A2*



Codice Articolo <i>Item Number</i>	L (mm)	B (mm)	C (mm)	R (mm)	D (mm)	SP (mm)	Ø (mm)	 Box	 Master carton	 Pallet
M8132-2-6	60	15	27	2	12	2	8	10	400	16000
M8132-2-8	77	15	37	2	12	2	8	10	200	8000
M8132-2-10	96	18	46	2.5	14,5	2	10	10	150	6000
M8132-2-12	120	21	55	2.5	16,5	2	10	10	100	4000
M8132-2-14	132	21	65	2,5	16,5	2,5	11	10	100	4000



Attenzione!!! Le caratteristiche tecniche sopra riportate, sono puramente indicative e possono subire variazioni da lotto a lotto, a seconda della produzione.  
*Pay attention!! The dimensions shown in the data sheets are subject to minimal variations (different production line batch).*